

9075 Comprint Court, Gaithersburg, MD 20877
301-926-2300 • www.css-md.org

Annual Report 2012

July 1, 2011 – June 30, 2012

Mission Statement

Community Support Services, Inc. is committed to the provision of quality community-based services to individuals with developmental disabilities. Individuals will be supported in accordance with their needs in school, work, home and the community.

Services to be provided may include, but are not limited to, the following: job development; job coaching; transportation; money management; recreational skill development; instruction and supervision in the home; and behavioral management. Services are designed by the individual, the individual's family, and others who know the individual well. Services are rendered in the environments in which the individual desires to live, work, recreate or pursue educational goals. Services are fashioned to support each individual to pursue his/ her own self-directed life goals.





From the Executive Director

Dear Friends,

CSS approached FY12 with a fresh outlook and assurance that the year would bring constructive change to the organization.

CSS continued to fight battles of years past, such as maintaining and exceeding the high standard of program quality and customer satisfaction that has come to be expected, while maintaining financial stability.

The organization saw many changes throughout the year, including strengthening infrastructure in order to sustain continued growth in capacity. Services were expanded, homes were renovated, training methods were enhanced, and community and volunteer relationships were strengthened, among other positive changes.

CSS was able to fine-tune hiring procedures, training curriculum and accountability systems to build on the skill and dedication of the direct support staff work force that are the heart of the organization. In FY12, CSS welcomed 114 new employees, and said farewell to 76,

totaling 381 staff as of June 30, 2012. CSS continues to utilize interns from local colleges and high schools as well.

With person-centered planning as a programmatic focus, staff received additional training, oversight and review of the implementation of the individual planning process. Volunteer and paid employment opportunities were expanded, and innovative ways of involving individuals in integrated settings were explored on a person-to-person basis.

In response to the needs of the community, successful children's programs were continued and strengthened, providing educational, residential, after-school, summer and holiday camp, in-home, and respite services to 76 children during FY 12.

CSS navigated the complexities of multiple funding sources for children and successfully assisted families in acquiring the funding for which they were eligible, utilizing sources such as the autism waiver, DDA, DHHS, MD Choices, and military respite, grants, scholarships and private funding.

The Marcia D. Smith School served 12 students in FY12, four of whom successfully transitioned to CSS adult services. The school continued its focus on the development of work and life skills to prepare students for a seamless transition at the age of 21.

Adult residential services expanded with five new individuals, bringing the FY12 total to 78 adults living in CSS residences. Eleven new individuals received funding for CSLA or ISS services, for a total of 34 adults living in their family home while receiving services beyond a day program. Day services saw the addition of 16 new individuals, for a total of 129 supported each day; 89 in supported employment services and 40 individuals received day habilitation services.

Options for a variety of work, recreational and social experiences within the community continued to be honed, with employment being at the forefront. Twenty-two new job sites were developed in FY12, increasing the total number of different job sites to more than 60 different paid and volunteer positions in the community.

In an effort to better enhance professional services to individuals currently supported by CSS, as well as prepare for future needs, the provision of psychological services were modified to include more intensive staff training; data systems were established as a means to

document follow-up training and staff performance, and counseling, language, art, dance and music therapy hours increased in FY12. A full-time cooking instructor as well as a nutritionist consultant remained integral parts of the team, evaluating, training and guiding individuals and direct support staff in the preparation of healthy meals and snacks.

Reliability scores of staff implementing plans remained stable at an average of 94.3 percent. Service quality was again monitored through an internal evaluation process, including a rating of consumer satisfaction for all services. Monthly status scores – a measure of program quality – decreased slightly with an agency-wide average of 90 percent and overall satisfaction ratings remained high.

Participation in recreational programs flourished in FY12 as individuals expanded their interests and ventured to try new activities tailored to their needs and interests. Montgomery County sponsored this year's interagency basketball league, and the soccer league continued, in which individuals supported by CSS, as well as two other agencies, participated. The customary entertainment offerings, such as art, music, fitness, and sports, continued, even on evening and weekends. CSS utilized recreational opportunities through Montgomery College, Potomac Community Resources, VisArts, Don Crofton



Dance Studio, Great and Small Horse Farm, special events organized by Whitney Lindsey, and the Montgomery County Department of Recreation.

The members of Making Connections continued to meet twice monthly throughout the year, enjoying movies, sports events and parties with peers.

Backyard Gardens continued, as well as five community plots, with eight CSS supported adults preparing the soil, planting and harvesting of a variety of vegetables and herbs. CSS also participated in shares with Red Wiggler Farm, picking up fresh produce weekly throughout the growing season.

The much anticipated annual events, such as the beach vacation, holiday party, prom and Olympics at Georgetown Prep, were successful and well-attended. CSS individuals look forward to the events, where they develop new interests, friendships blossom, and competency in social settings continues to thrive. Generous support from donors, including family members, community members, and a local foundation, provided the revenue which allowed these special events, recreational and social activities to continue.

CSS remained financially strong in FY12 and continued to utilize multiple sources of revenue. The Developmental Disabilities Admin-

istration provided more than 90 percent of the funding needed to operate adult services. Montgomery County matched DDA funds with an annual supplement of approximately 8 percent, and the Maryland State Department of Education provided the bulk of the funding for children's services. CSS earned additional revenue due to the DDA increase in rates and low absentee rate of its program participants. CSS utilized a one-time-only infrastructure grant of \$60,000 from the DDA to purchase fifteen new vehicles used to provide transportation to community locations.



In the past fiscal year, CSS updated its five-year capital plan for the maintenance and upgrade of its homes. CSS partnered with The Harry and Jeanette Weinberg Foundation to purchase and renovate two new residences in FY12. The HJF provided nearly 30 percent of the cost of purchase, renovations and furnishings for a grant of \$135,000. CSS raised the matching funds through donations and internal funds to successfully complete the project. The two new residences provided homes for four individuals, who are enjoying life in their communities.

CSS purchased an additional townhouse as a resale through the MDPU program, which is scheduled for renovation using county funding.

Three renovation projects approved in FY11, totaling \$115,635, were successfully completed this year. Two new projects were approved by Montgomery County Group Home Renovation Program for \$14,460 and completed this year.

CSS is fortunate to have the continued support of the community as donors, volunteers and advocates. Family members of individuals provided vital assistance in FY12 while developing friendships and bonds with each other. The FACE group met regularly, organizing dinner fundraisers and a reoccurring lecture series featuring topics important to those with disabilities. Family members provided advocacy at the state and county levels, providing others with much needed information and supporting CSS staff and individuals. The generosity of CSS' family and friends was especially apparent in so many ways throughout the year – from cooking a special dish at a residence, to joining a work group or committee, to volunteering at a CSS event. The ever-expanding network of support has strengthened CSS' resolve to overcome obstacles and fulfill goals.

CSS faces 2013 knowing it has a vital role in the lives of Montgomery County people with significant developmental disabilities. A key goal moving forward continues to be the development and maintenance of a strong foundation of support, which enables each individual to participate fully in our community life.

The focus must stay strong to ensure the support system for each individual remains flexible and is allowed to evolve as the person and the surrounding community changes.

The challenges for the year ahead are daunting: to develop strategies to maintain quality services while faced with continued underfunding of services by government ; to advocate for essential services, meeting the specific needs of individuals; to support innovative models of services while identifying new resources; to adjust administrative procedures to maintain the high quality of services despite changing regulations and standards; to attract and maintain a highly trained and effective work force; and to continue to build community partnerships and coalitions to increase involvement, integration and awareness.

CSS has the commitment, determination and expertise to face these challenges



head-on. United by a resolve to build a more inclusive community, while supporting the self-directed life goals of each individual, CSS moves forward into FY 13 with confidence.

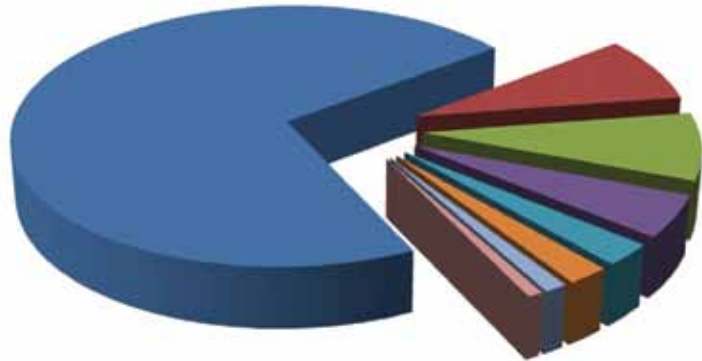
Sincerely,

A handwritten signature in black ink, which appears to read "Steve Lopez". The signature is written in a cursive, flowing style.



Financial Summary: Year Ended 30 June 2012

Public Support and Revenue



■ Maryland DHMH: 71.8%	■ Fees: 2.7%
■ Medicare (Autism Waiver): 8%	■ Other: 2.2%
■ MSDE: 8.2%	■ Grants: 1.2%
■ Montgomery County: 5.1%	■ Donations: 0.8%

Program & Administrative Expenses

Community Support Services, Inc. is audited annually by Mullen, Sondberg, Wimbish & Stone, P.A. A full FY12 audit report is available upon request.

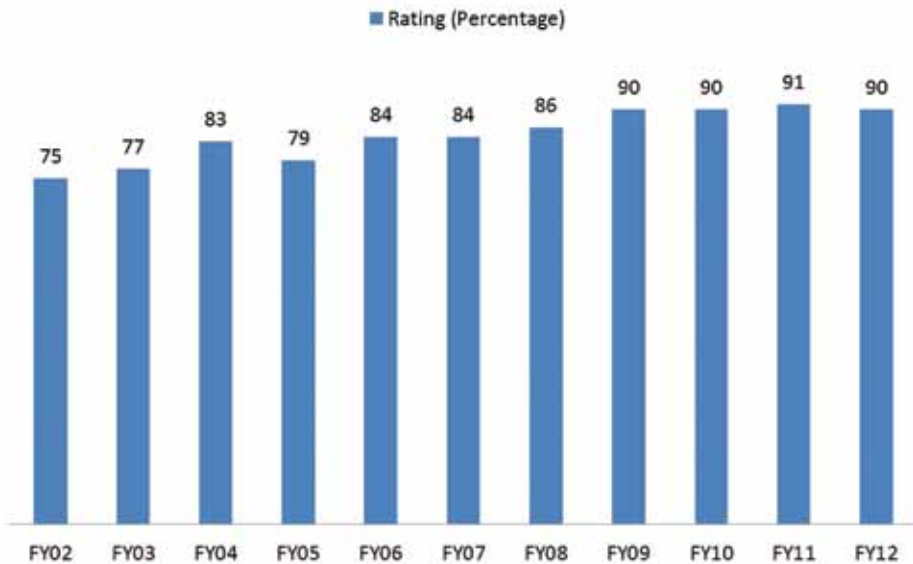
Sal & Fringe	10,721,518	1,325,132	12,046,650	77.8%
Fac & Equip	445,680	55,084	500,764	3.2%
Program Act	439,145	54,276	493,421	3.2%
Clin Prof	343,978	-	343,978	2.2%
Dep	902,651	97,678	1,000,329	6.5%
Ins	226,561	28,002	254,563	1.6%
Travel	273,825	33,844	307,669	2.0%
Interest	105,173	7,301	112,474	0.7%
Other	300,141	36,150	336,291	2.2%
Profess Fees	83,640	10,337	93,977	0.6%
	13,842,312	1,647,804	15,490,116	100.0%
Admin as % of Total Expense				10.6%

Performance

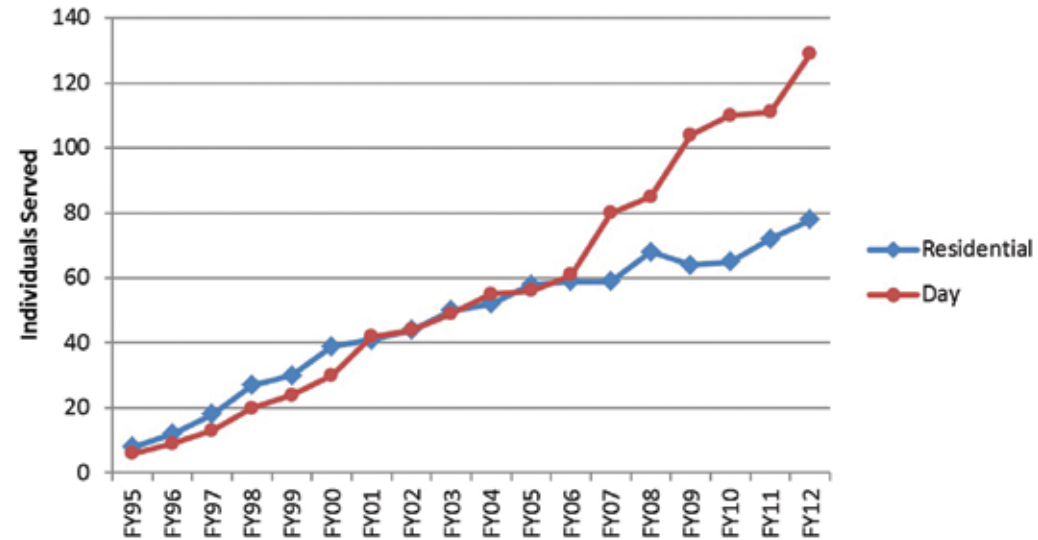
Strengthening Services

The monthly status system monitors program quality in critical areas on an ongoing basis. Each residential, educational and employment site is observed and evaluated by a program supervisor each month. The rating for each site is shared with all staff and areas needing improvement are reviewed and corrected. The average monthly status score across CSS services in FY12 met the 90 percent goal for all services.

Quality Assurance Measure



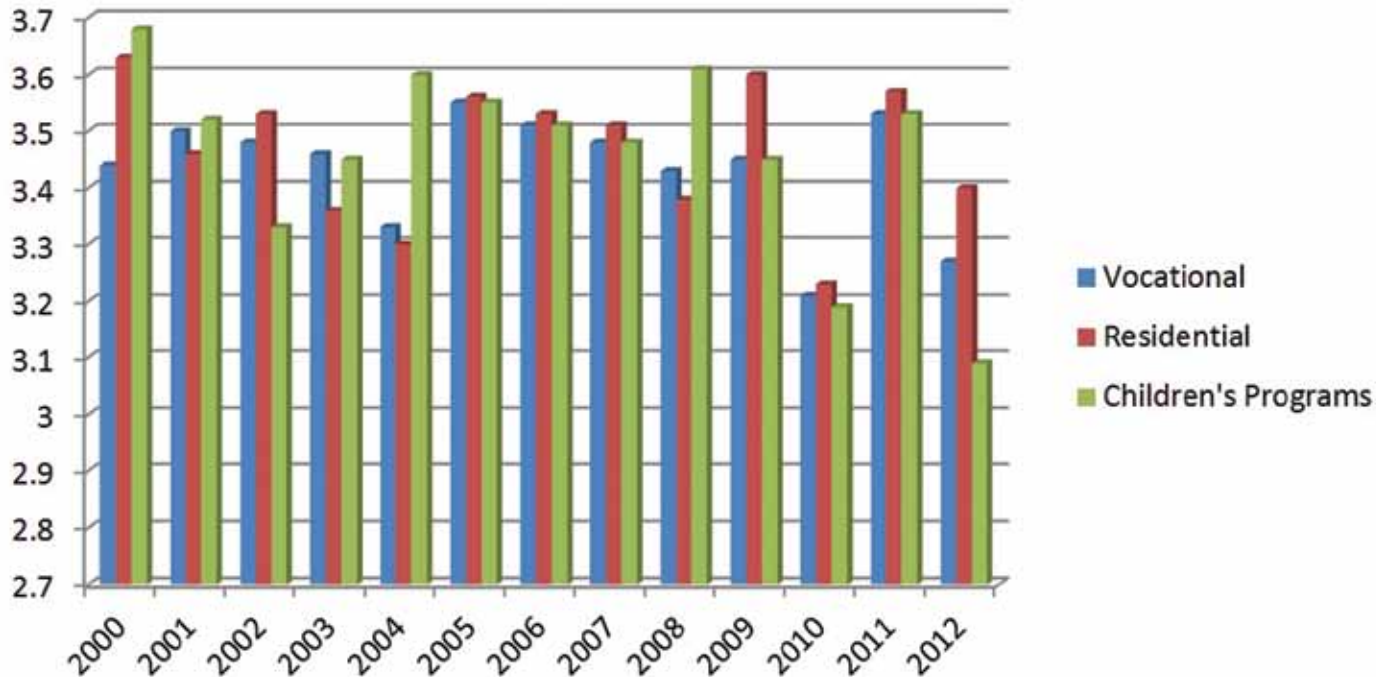
Adult Services Growth



Performance

The CSS Board of Directors conducts an annual satisfaction survey as part of the internal evaluation of quality. Individuals, family members and staff rate their level of satisfaction on specific areas of services with residential, supported employment and children's services. A 4 indicates that the respondent is highly satisfied and a 1 indicates a low level of satisfaction with that item. CSS services have maintained a consistent level of satisfaction, between satisfied and highly satisfied (3-4) each year since inception.

Internal Satisfaction Survey Results Across Agency



CSS Staff: July 1, 2011 – June 30, 2012

Administrative and Supervisory Staff

Lucinda Adams	<i>Director of Clinical Operations</i>	Kristina L. Gorman	<i>Director of Adult Day Services</i>
Stephanie Addabbo	<i>Nurse</i>	Patrick Graveline	<i>Director of Programs</i>
Amavi Ahianor	<i>Senior Assistant Program Director</i>	Monique Greene	<i>Medical Coordinator</i>
Jennifer Ahmed	<i>Community Support Coordinator</i>	Wayne M. Gregory	<i>Deputy Day Director</i>
Adaoha Ajeroh	<i>Community Support Coordinator</i>	Douglas Hubbard	<i>Facility Maintenance Coordinator</i>
Michael Alexander	<i>Director of Facilities</i>	Brooke Huntley	<i>Assistant Program Director</i>
Connie Antonio	<i>Deputy Director of Finance</i>	Susan C. Ingram	<i>Executive Director</i>
Hosea Bett	<i>Community Support Coordinator</i>	Lindsay Isreal	<i>Administrative Assistant</i>
Twyla Bishop	<i>Community Support Coordinator</i>	Ryan James	<i>Community Support Coordinator</i>
Sean Blakley	<i>Senior Assistant Program Director</i>	Allison Jarvis	<i>Assistant Director of Special Programs</i>
Joy Brill	<i>Nurse</i>	Nickell Jennings	<i>Senior Assistant Program Director</i>
Michael Carlton Brown	<i>Administrative Assistant</i>	Samuel Jones	<i>Assistant Program Director</i>
Kara Lynn Burton	<i>Office Manager</i>	Zainab Kamara	<i>Nurse</i>
Mary Ashley Chatneuff	<i>Recruiter</i>	Nemata Kamara-Jobe	<i>Community Support Coordinator</i>
Manda Chungu	<i>Community Support Coordinator</i>	Christopher Kane	<i>Special Education Teacher</i>
Pauline Cole	<i>Community Support Coordinator</i>	Gyesi Korang	<i>Community Support Coordinator</i>
Sassy Daly	<i>Program Specialist</i>	Sharon Koza	<i>Nurse</i>
Cheyenne Davidson	<i>Clinical Director of Children's Services</i>	Valerie Krupin	<i>Administrative Assistant</i>
Edem Kofi Dogboe	<i>Nurse</i>	Laura Lear	<i>Director of Administration</i>
Pierre Dorival	<i>Community Support Coordinator</i>	Kimberly Limparis	<i>Assistant Program Director</i>
Bruke Fasil	<i>Administrative Assistant</i>	Kerrie Love	<i>Human Resources Assistant</i>
Kristin Ferragut	<i>Director of Education</i>	Char-Anne Lyon	<i>Executive Assistant</i>
James Gipson	<i>Director of Human Resources</i>	Festina Manly-Spain	<i>Community Support Coordinator</i>
Alicia Glassman	<i>Community Support Coordinator</i>	Stacey L. McCarley	<i>Billing and Accounts Receivable</i>

Angelique McCoy
Cynthia Meredith
Kristina Nabors
Samuel Ntim
Christine O'Connor
Adjoke Olympio
Daniel Orcullo
Doris Ortiz
David Ozag
Ashley Parker
Craig Phillips
Lorraine Planta
Doris Quentin-Charles
Adam Rast
Katherine Raymond
Lauren Reis
James Richards

Medical Coordinator
Education Specialist
Administrative Assistant
Special Education Teacher
Payroll Manager
Community Support Coordinator
Teacher
Accounting Clerk
Director of Operations
Communication Coordinator
Coordinator of Operations
Nurse
Community Support Coordinator
Cooking Instructor
Director of Therapeutic and Individual Services
Behavior Specialist
Senior Assistant Program Director

Craig Roberts
Matthew Rodgers
Matt Sanli
William Scherping
Margaret Serry-Kamal
Tara Sheridan
Tammie Snyder
Roger Stanley
Rhonda Stull
Jonathan Swann
Christopher Taroli
John Taylor
Fasil Temesgen
Patrick Ugboaja
Elmo Urey
Jane Waweru
Jacklyne Wonde

Director of Adult Recreation Services
System Administrator
Fleet Manager
Director of Finance
Community Support Coordinator
Communications and Development Manager
Associate Director
Receptionist
Director of Residential Services
Community Support Coordinator
Behavior Specialist
Director of Facilities
Director of Special Programs
Assistant Program Director
Community Support Coordinator
Human Resources Manager
Community Support Coordinator



Direct Support Staff

Awake Overnight

Francis Asante
Timothy Asantey
Salem Barry
Brima Cherif
Mohamed Dumbuya
Edward Gyamfi
Jacqueline James
Foday S. Kamara
Nickson Kurgat
Amadu Lamin
Robert Maxwell
Wonkai Momolu
Delight Napoabil Mosore
Hamid Savage
John Stemn
Myriam Stevenson
Beatrice Tamakloe
Sorrie Turay
Jude Williamson

Community Employment Associate

Moses Vincent
Nicholas Yevo
Zacchaeus Yon

Community Living Associate

Eric Acha
Charles Amofo
Kwaku Armooh
Lawvet Asukwa
Benjamin Atakora
Alexander Bazzie

Kwabena Bempah
Natnael Binyam
Samuel Kwame Boakye
Theophilus Danquah
Olasumbo Edu
Godlove Ekane
Florence Esehngome
Bernard A. Fayorsey
Lydia Houdrroush
Emmanuel Idun
Bernard Kleido
Abubakarr Koroma
David Morris
Agathon Mouganda
Abdul Karim Muma
Ampofo Obeng
Soh Park
Isaac Richards
Yama Saye
Gershon Senaya
Alusine Sidique
Ernest St. Pierre
Pidier St. Pierre
Walter Suggs
Alican Tuncer
Abu Bakar Turay
Wellington Wasonga
Gibril Yansaneh
Pierre Yombi Essama

Community Support Associate

Hannah Abraham
Charles Agyei
Hilda Ahmed
Ayikoe Ajavon

Olivia Akoth
Rosa Alvayero
Mercey Blue
Bendu Boyce
Erin Bryan
Mercedes Burke
Marwan Castellani
Michael Che
Etta Collins Nicol
Christine Creque
Brook Daniel
Meraf Derese
Lilia Domingo
Eric Dormang
Rachel Easterling
Jurgen Frenz
Lothar Frenz
Saidi Harerimana
Stacey Jerome
Sandra Kamah
Hoyoung Kang
Joanna Karngar
Clarisse Kehou
Kelsea Kephart
Eric Klein
Pilar Knight
Ibrahim Konneh
Claire La Fleur
Jomblah Lamin
Natan Meaza
Akaido Mohammed
Paddy Mukwaba
Mugo Nganga
Edward Ninda
Sandra Pinkett
Francisca Polanco

Viraj Raiker
Milot Rizil Jr.
Juliana Sarkodee
Carly Smith
Kangni Somado-Hemazro
Finley St. Pierre
Jaclyn Ann Sweeney
Latoya Terry
Yanina Del Carmen Ticas
Susana Vallecios
Kathy Wang

Employment Instructional Associate

Bernard Adono
Joseph Allou
Mohamed Amara
Ebenezer Appiah
Aman Assefa
Allen Barnes
Michael Barry
Aisha Beatty
Andrew Berewa
Luc Gilbert Bitjad
Ehulu Boya
Robert Brown
Chernor Bundu
Andrea Burdette
Bwalu Jumanne Bwalu
Matthew Carpenter
Ronald Cooper
Komlan Dagbame-Ulrich
Lisa Deleon
Hanna Dibaba
Dorothy Djobo
Albert Eboue

Sampson Eduful
Jemal Fedil
Foster Fianko
Yvonne Fonseca
Agnes Forbin
Vincent Frimpong
Dominic Garber
Almamy Gassama
Theresa Geegbe
Kossi Govon
Monica Patricia Gutierrez
Peter Gwanyalla
Keff Ahmed Hassan
Eric Hufnagle
Mohamed Idriss
Edwin Jackson
Fatmata Janneh
James Johnson
Allan W. Juxon-Smith
Roger Kabagama-Payne
Mohamed Kabba
Alusine Kamara
Emmah Kamara
Abu Kamarah
Matthew Kamei
Boniface Ndunga Kanani
Yassah Kargbo
Sheila Karikari
Rhoda Kay
Mary Khanu
Zack Kim
Yawo Kondo
Mary Kouko
Abdul Kuyateh
Yohannes Limenih
Lisa Louis

Iyamide Macbailey
Evangeline Mancka
Sam Mancka
Ishmail Siddra Mansaray
Karen Massada
Jamesina Max-Browne
Teddy Max-Browne
Eric Mensah
Michelle Merrill
Grace Millinga
John Mutie
Linje Nankhuni
Thaddeus Ndanjong
Jean Marc Nken
Emilienne Nsateng
Carine Nya
Maurine Obi
Lawrence Odotei
Frederick A. Ofori
Andy Ojinnaka
Adewale Joseph Okumodi
Olorunlogbon Omopariola
Modupe Omopo
Thompson Owusu
Patrick Putu
Ebenezer Quarshe
James Quaye
Bone Randolph
Mohamed Sanu
Tracy Sealy
Ibrahim Sorie Seck
Girma Meaza Senay
Abu Sesay
Sory Souare
Amadu Sowa
Matthew Springer

Kai Lebbie Tiafoe
Jonah Toeé
Garolyne Togba
Lucas Uzoka
Fabian Vesoh
John Wachanga
Edith Waller
Birdelyn Weems

Instructional Associate

Amin Dallal
Njifen Buma Dohnji
Chanta Dukuly
Jacques T. Gbaba
Mayra Gutierrez
Armah Kamara
Apolline L. Kolani
DeShannon Lankford
Fulbert Lewedia
Frederick Obeng
Bruce Pope
Rayisha Quarrie
Nelson Rodriguez
Alimamy Suma
Lolita Villegas
Charles Williams
Adam Wysong

Residential Instructional Associate

Edwin Achu
Rocky Addison
Kastoria Addy
Omojesu Akinkuade
Esther Akinyi P. Garner
George Frank Amfo-Koranteng
Stephen Andoh
Charlotte Annan
Matthew Mercy Ashley

Desmond Ayim-Boateng
Sajalieu Barrie
Selamawit Belayneh
Lionel L. Bongkiyung
Marcus Byrd
Abena Caesar
Arnold Caulker
Felicia Chongwa
Ibrahima Conte
Zakia Cummings
Urbain Charly Dadjeu
Sherma Darlington-Wilson
Victor Deen
Phillip Delgado Jr.
Albertine Dennis
Aminata Derra
Katiana Dieujuste
Isaac Dikenah
Tiangai Dorley
Alama Dumbuya
Forson Edwards
Janet Edwards
Obediah Egekwu
Emmanuel A. Etei
Tanyi Eyongetah
Michael Fonju
Nerlande Foreste
Fon Frankline
Thomas Gaye
Julian Gbaba
Saba Getachew
Eugeneanthony Bryce Henry
Susan Houston
Sampson Itoka
Odepeli Iwori
Charles John
Quincy Jones
Salifu Kabbany
Abdul Kamara

Abubakar Kamara
Kebret Kebret
Larissa Ketum
Angela Khanu
Emmanuel Khanu
Alice Koffy
Augustus Korkoya
Alie Koroma
Alain Kue
Frederick Kumbela
Nicole Langlois
Garmai Lepolu
Christopher Madukweh
Delroy Matthie
Ephraim Mbonu
Daniel K. Melli
Belayneh Mengesha
Dora Mensah
Isaac Mensah-Poku
Candace Mohammed
Henry Morray
Michael Mutuku
Susan Ndunga
Florine Ngazanga
Milton Ngemesone
Agyemang Nkrumah
Ugochukwu Benson Nwoji
Daniel Okine
Oladipo Olorunlogbon
Ejike Owuh
Mohamed Sankoh
Dougo Sidibe
Corina Sirleaf
Carol Sowu
Annie K. Tchinda
Isaac Toeé
Lynda Tolbert
Sulaiman Turay
Angela Waters

Emmanuel Wawa
Robert Williams
Mariama Wilson

Substitute

Maria Abayomi-Cole
Amechi Adamson
Daniel Adjei
Fred Akinto
Adjoa Amaglo
Esther Attemene
Veronica Awasom
Rose Bright
Gail Brown
Lena Cole Smith
Agatha Cole
Robert Dawson
Brian Ddumba
Mercy Ferguson
Robin Nordeen Carter Gaither
Queenesha Herbert
Genevieve Holmes
Reginald Ibe
Abraham Jalloh
Beckey Bangurah Johnson
Sylvester Kaizea
Clarence Kandakai
Kellie Kibler
Robert Komlan
Aiah Konah
Catherine Kwakwa
Arsenio Malondras
John Mensah
Fokum Munawoe
Theresa Orah
Kelechi Oriaku
Fritzgerald Page
Roger Sackey
Akosua Safo

Augusta Sannoh
Caroline Sone
Gabriel Taylor
Paye Tingba
Hawa Turay
Mary Wilson-Bih
Ivy Yeboah





Professional and Consultant Services

Anzhela Akbarova
Dr. David Band
MaryAnn Blotzer
Allison Burns
Rachel Carr
Patti Clements
Dr. Ghislaine Fougy
Miri Frenkel-Yacubovich
Jonah Greene
Sue Greene
Lynn Gorman
Dr. Cyril Hardy
Thomas Hyde
Dave Jones
Janet Knapp
Sue Li Lee
Marilyn Leeseburg
Susan Levine

Art Therapist
Psychiatrist
Licensed Social Worker
Psychology Associate
Psychology Associate
Speech & Language Therapist
Psychiatrist
Music Therapist
Therapist
Adapted Dance Instructor
Accounting Consultant
Psychiatrist
Behavioral Neurologist
Drumming Instructor
Dietician-Nutritionist
Behavior Specialist
Music Therapist
Speech Therapist

Dr. Robert Morganstein
Dr. Smita Patel
Steve Poss
Ricky Ortiz
Corinne Woolley Richards
Laura Schneider
Dr. Mahteme Selassi
Cheryl Shaw
Dr. Hugh Sickle
Dr. Marcia Smith
Jessica Swift
Dr. Marilou Tablang-Jimenez
Darnell Thomas
Erin Weiner
Annette Williams
Dr. Robert Wisner-Carlson
Jeffrey Young

Dentist
Psychiatrist
Occupational Therapist
Piano Lessons
Music Therapist
Art Therapist
Psychiatrist
Behavior Specialist
Psychiatrist
Psychologist
Dietician
Psychiatrist
DDA Master BPS Trainer
Speech & Language Therapist
Professional Counselor
Psychiatrist
Piano Lessons

Spotlight on Services



Scott Astrove, 21, joined the Marcia D. Smith School at CSS in July of 2009. Efficient at data entry, Scott enjoys a number of community jobs with the support of intensive staffing, including the League of Women Voters, where he enters voter registration information into their data base; Delegate Mizeur's office, where he updates the contact database; Community for Hope, where he scans and files invoices; Health and Human Services, where he maintains the activity calendar for seniors; and Shady Grove Nursing, where he wipes tables and sets up the dining rooms. Scott enjoys swimming, hiking, yoga, running and Wii bowling. Scott aged out of educational services in June 2012 and seamlessly transitioned to adult supported employment services funded through DDA.



Ryan, 27, entered CSS residential and day services in 2006, after aging out of a residential special education program in another county. He receives continuous support from staff in a new townhouse in Clarksburg that he shares with his housemate, Matt. The two men's families helped furnish Ryan and Matt's new home comfortably and attractively, which both enjoy. Ryan weekly rolls and delivers Gazette newspapers in Gaithersburg. He also washes and folds towels for a hair salon, and participates in other various vocational training activities. Ryan looks forward to CSS sponsored events, such as holiday parties, coffee houses, eating out, and the Olympics. Ryan's parents join him for these special events as well as enjoy seeing him regularly since he moved back to Montgomery County. He enjoys an active weekly schedule, which includes meals at Applebee's, taking community art classes and swimming. Ryan is a happy, productive and involved young man.

Spotlight on Services



Amy participates in Day Habilitation and CSLA services with CSS. Amy's schedule of support, designed by her family and team, includes extended day and weekend support. Amy volunteers at the Interfaith Thrift Shop in Rockville two days a week, hanging clothes and sorting shoes. She is also part of the Birthday Organizers, a self-employment venture that plans birthdays for CSS supported individuals and staff. Amy enjoys a variety of community activities with her peers, such as shopping, bowling, and spending time at Bohrer Park and the library. On Saturdays, Amy explores local restaurants, town centers, nail salons, festivals, orchards and farmers markets. She partakes in an assortment of activities at CSS, such as Celebrations group, vocational skill development, and computer skill development and exercise classes. Therapeutic services are integrated throughout Amy's week and include psychological, OT and art therapy.



Sisters Ebony, 12, and Yvonne, 11, live in Gaithersburg with their mother and older siblings. The Ferguson sisters were each approved to receive CSLA services when DDA approved funding for individuals assessed as meeting the criteria for Crisis Resolution. Both girls enjoy their increased opportunities for being amongst their peers and in the community, since they began coming to CSS in June of 2011. Ebony and Yvonne currently attend the therapeutic after-school program, Saturday camp program, and summer and holiday day camp services. Some of their favorite activities at CSS include art projects, dancing, playing on the computer, cooking, and trips into the community to play at the park and playground. They also like to eat out at the mall, go swimming, and especially enjoy bouncing around at PumpItUp! Each of the girls has a delightful personality and aspires to use their new skills to better engage in the community with their friends. The girls also participate in a specialized evening dinner group, unique to Ebony and Yvonne's program. They join another pair of sisters of similar age to prepare dinner and engage in leisure activities together. Both girls have shown tremendous growth in social and functional life skills and enjoy recreation in the community with others.

Thank you, Donors! July 1, 2011 – June 30, 2012

New Homes

Funded in part by a grant from The Harry and Jeanette Weinberg Foundation



Four individuals supported by CSS are enjoying their new homes, thanks to a grant from the Harry and Jeanette Weinberg Foundation to purchase and renovate two new residences.

Sabrina & Abdul Al-Jabbar
Alfred & Angela Altimont
Kyle Anderson
Connie Antonio
Robert & Lyda Astrove
Daryl Atkins
Bahadori Accounting & Tax Services, Inc.
John & Betty Bahadori
Eilemn Baker
Ed, Barbara & Amy Patigalia
Kenneth & Corinne Barnes
Richard Bataglia & Leigh Sutherland
Mary Baxter
Birch & Alice Bell
Robert & Barbara Bender

Philip & Nanette Bevan
David Black
Nadeem Bokhari
Harminder Brar
William Bridgman & Mary Baxter
Eric & Jennifer Baxter
Darlene Campbell
Granville & Marjorie Campbell
Joan Carlson
James & Sherill Carothers
Carriage Hill of Bethesda, Inc
Shushan & Shenn-Yu Chao
Megan Ciesluk
Clark Construction Group
Paul & Andrea Cocozzella

Jeffrey & Leslie Fried Cohen
John Collins
Joseph & Debra Connors
Edgar & Nancy Corr
Jim & Patrice Datovech
Debebe Family
John & Nancy Devierno
David & Molly Diamond
Thomas Diamond
Donohoe Advisory Associates, LLC
Clyde Duncan
Mary Ann Ellis
Neil Ellis and Bonnie Baugh
Jay Evan
Faranak Sadeghi & Babak Behseta

James & Michael Fegan
Jeffrey & Katherine Fones
Robert & Constance Frasche
Frederick & Nancy Provorny
Gary & Beverly Fried
Gary & Claire Funkhouser
Mary Glasgow
Eden Glen
Steven & Lydia Glucksberg
Jonathan & Deborah Gottlieb
Douglas L. Greenspan
Dr. Douglas & Sidney Greenspan
Peggy Greenspan
Michael & Kathryn Griffin
Howard & Susan Gruenspecht

Johnny Hurtado & Paula Soto
Edith & Virginia Hustvedt
Susan Ingram
Amy Jacobson
Just Give
Kamara
Ababakar Kamara
James & Joan Kane
Kevin Kane
Barbara Kaufmann
John Kazmierczak
Dennis & Mary Keyser
Thomas & Diana Kollecas
Jeffrey Kopp
Gyesi Korang
Joseph and Susan Krempasky
Thomas & Danielle Lane
Debang Lao
Larkins Family
Joyce E. Leasure
Mark and Vicki Leemon
Marilyn Joy Leeseberg
Xiangyang Liu & Fenguo Peng
Lloyd Pluming
Luis & Lizabeth Lopez
J. Casey & Kathleen McCormick
Doug McDaniel
Paul McDonough & Myra Beltran
William John McGolrick
Thomas McKnight
Merck Partnership For Giving
Howard and Tahma Metz
Microsoft Community Affairs
Andrew Mitz & Carol Fried
Albert Moy
Barbara Mulleney
Donna & Steph Musselwhite
Andrea Nation
Fred & Carole Newman
Audrey Nolan
Carine Nye

Virginia Ozag
James Patton & Patricia Reeves
John & Norma Pawulak
Daniel Perez
Rodrigo & Theresa Perez
Philip & Kathy Perlman
Mary Peter
Jacqueline Pfferrer
Maryam Pishad
Stuart & Laura Plank
James and Barbara Pope
Amble & Uma Prasad
J.W. Pucillo
Dr. Jeffrey & Patricia Pukatch
Scott Reichmeider
Frank Leslie Rhoades III
Betty Ricketson
Carver & Stefanie Ricketson
Joseph and Sandra Robinson
John & Elizabeth Roth
Ginna Royalty
Madeleine G. Rudd
Raj & Amita Sarin
Jacqueline Schick
MB Schmitt
Craig & Jillyn Schulze
Rob Segal
Sellica Corp
Todd Sheridan
Emily Shumate
David & Miriam Silverman
Tina Smith
Bahach Sorkabi
Stuart Spielman & Mona Zeiberg
Joseph M. Stanton
Sa Su
Krishnamurthi & Nalini Sudhir
Bruce Tapper
Jonathan & Cindy Tepper
Charles and Selina Thackston, Inc.
Gil & Mary-Ellen Thurm

Ellen Tobin
James & Irma Troppman
Trump, Inc.
Robert & Ellen Turverey
Craig & Katherine Ulman
Kirk & Debbie Van Brunt
Joanne Vanderhorst
Andrew & Patricia Varipapa
Verizon Foundation
Julia Wagman
Harry and Jeanette Weinberg Foundation
Harriet Weiss
Scott Wells
Jeffrey & Karen Wendel
Alice Willer
Annette & Paul Williams
Patrick & Sheila Williams
Alexandria Windcaller
Donald M. Wingo
Michell Wynn
Lois Yarman
Mary Yee
Marilyn Zeiberg





Go online to check out our website for more photos, videos,
and links to our social networks.

www.css-md.org

